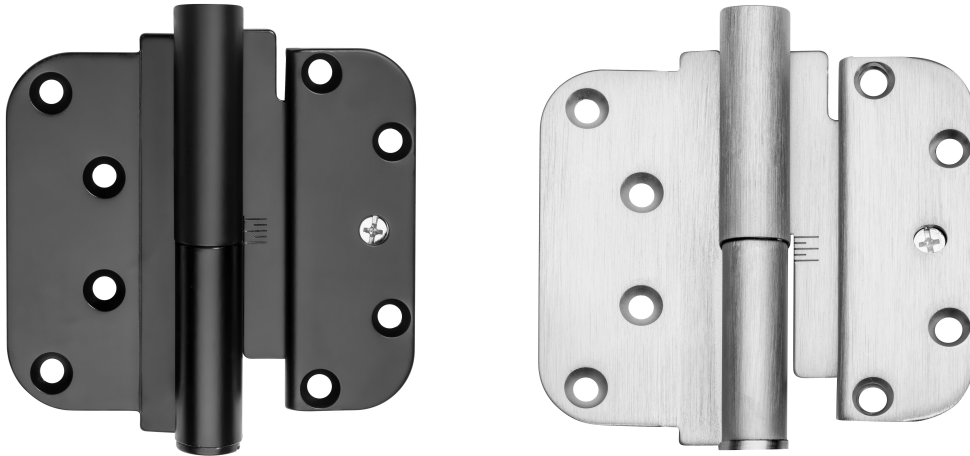


Roto HPD Hinge

Made for accessibility and ease of installation, these heavy gauge all-metal constructed hinges lift off for easy removal and installation of the door panel. The heavy duty hinge pin also provides a locator feature for easy installation and the combination head adjustment screw provides convenient adjustability for door alignment in the field.



Features & Benefits

- Independent dual vertical 1/4" and 5/16" adjustment
- 7/16" hex head vertical adjustment screw
- 7/16" heavy duty diameter pin
- Industry standard routing with 5/8" corner radius
- Maximum adjusted door weight (3 hinges): 180 lbs. (82 kg)
- Maximum adjusted door weight (4 hinges): 240 lbs. (109 kg)
- Third party tested to 350,000 cycles, exceeding BHMA Grade 3
- Concealed ball bearing inside the hinge knuckle for a cleaner look
- Non-removable pin makes it suitable for inswing and outswing applications
- Available in Matte Black and Brushed Nickel finishes

Part Number	Description	Box Quantity
2005477	ROTO HPD HINGE, LH, MATTE BLACK	30
2005478	ROTO HPD HINGE, LH, BRUSHED NICKEL	30
2007425	ROTO HPD HINGE, RH, MATTE BLACK	30
2007426	ROTO HPD HINGE, RH, BRUSHED NICKEL	30