

Roto DuoTilt

Roto's new combination lock system for hung windows allows three sash lock actions (lock, unlock, and tilt) while providing a hidden tilt latch function.

Classic



Aero



Tilt Latch | Center



Tilt Latch | Offset

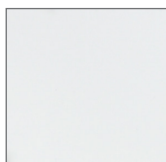


Features & Benefits

- Zinc alloy sash lock components
- Compatible with vinyl profiles
- Two sash locks are needed for all window widths
- Intuitive operation with lock and tilt latch dual actuation
- Visual sash lock markings to note window status (locked symbol, unlocked symbol, tilt)
- Tactile lever feedback indicates when the lock has changed position
- Tilt latch and connector are pre-assembled for easy installation and connection to the sash lock
- Offset and Center tilt latches available for additional profile applications
- Tested internally above 10,000 cycles and internally FER tested to ASTM F588-17 up to grade 40
- Patented design
- Active and passive locks available in below finishes



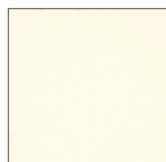
G2 White - 00



Blue White - 03
(Aero only)



Dark Brown - 06
(Aero only)



G1 White - 08
(Aero only)



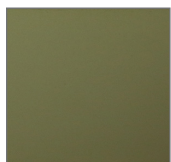
Almond - 26
(Aero Only)



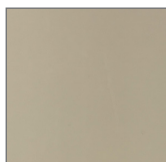
Antique Brass - 33



Almond MK - 38



D9 Brass - 42



Adobe - 45
(Aero Only)



Brushed Nickel - 46



Copper - 68



Black - 70



Faux ORB - 71

Classic

| Part Number | Description | Box Quantity |
|-------------|---|--------------|
| 2034766 | DUOTILT SASH LK LH ACT 11/16" V1 G2 WTE | 100 |
| 2034767 | DUOTILT SASH LK LH ACT 11/16" V1 ANT BR | 100 |
| 2034768 | DUOTILT SASH LK LH ACT 11/16" V1 ALMD MK | 100 |
| 2034794 | DUOTILT SASH LK LH ACT 11/16" V1 D9 BRASS | 100 |
| 2034795 | DUOTILT SASH LK LH ACT 11/16" V1 BR NKL | 100 |
| 2034796 | DUOTILT SASH LK LH ACT 11/16" V1 COPPER | 100 |
| 2034797 | DUOTILT SASH LK LH ACT 11/16" V1 BLACK | 100 |
| 2034798 | DUOTILT SASH LK LH ACT 11/16" V1 F.ORB | 100 |
| 2034799 | DUOTILT SASH LK RH ACT 11/16" V1 G2 WTE | 100 |
| 2034800 | DUOTILT SASH LK RH ACT 11/16" V1 ANT BR | 100 |
| 2034801 | DUOTILT SASH LK RH ACT 11/16" V1 ALMD MK | 100 |
| 2034802 | DUOTILT SASH LK RH ACT 11/16" V1 D9 BRASS | 100 |
| 2034803 | DUOTILT SASH LK RH ACT 11/16" V1 BR NKL | 100 |
| 2034804 | DUOTILT SASH LK RH ACT 11/16" V1 COPPER | 100 |
| 2034805 | DUOTILT SASH LK RH ACT 11/16" V1 BLACK | 100 |
| 2034806 | DUOTILT SASH LK RH ACT 11/16" V1 F.ORB | 100 |
| 2034807 | DUOTILT SASH LK LH PASS 11/16" V1 G2 WTE | 100 |
| 2034808 | DUOTILT SASH LK LH PASS 11/16" V1 ANT BR | 100 |
| 2034809 | DUOTILT SASH LK LH PASS 11/16" V1 ALD MK | 100 |
| 2034810 | DUOTILT SASH LK LH PASS 11/16" V1 D9 BR | 100 |
| 2034811 | DUOTILT SASH LK LH PASS 11/16" V1 BR NKL | 100 |
| 2034812 | DUOTILT SASH LK LH PASS 11/16" V1 COPPER | 100 |
| 2034813 | DUOTILT SASH LK LH PASS 11/16" V1 BLACK | 100 |
| 2034814 | DUOTILT SASH LK LH PASS 11/16" V1 F.ORB | 100 |
| 2035145 | DUOTILT KEEPER TOP MOUNT SL2 V1 G2 WHITE | 200 |
| 2035146 | DUOTILT KEEPER TOP MOUNT SL2 V1 ANT BR | 100 |
| 2035147 | DUOTILT KEEPER TOP MOUNT SL2 V1 ALMD MK | 200 |
| 2035148 | DUOTILT KEEPER TOP MOUNT SL2 V1 D9 BRASS | 100 |
| 2035149 | DUOTILT KEEPER TOP MOUNT SL2 V1 BR NKL | 100 |
| 2035150 | DUOTILT KEEPER TOP MOUNT SL2 V1 COPPER | 200 |
| 2035151 | DUOTILT KEEPER TOP MOUNT SL2 V1 BLACK | 200 |
| 2035152 | DUOTILT KEEPER TOP MOUNT SL2 V1 FAUX ORB | 200 |

Aero

| Part Number | Description | Box Quantity |
|-------------|--|--------------|
| 2034815 | DUOTILT SASH LK LH ACT 11/16" V2 G2 WTE | 100 |
| 2034816 | DUOTILT SASH LK LH ACT 11/16" V2 B WTE | 100 |
| 2034817 | DUOTILT SASH LK LH ACT 11/16" V2 DK BRWN | 100 |
| 2034818 | DUOTILT SASH LK LH ACT 11/16" V2 G1 WTE | 100 |
| 2048238 | DUOTILT SASH LK LH ACT 11/16" V2 ALMOND | 100 |
| 2034819 | DUOTILT SASH LK LH ACT 11/16" V2 ANT BR | 100 |
| 2034820 | DUOTILT SASH LK LH ACT 11/16" V2 ALMD MK | 100 |
| 2034821 | DUOTILT SASH LK LH ACT 11/16" V2 D9BRASS | 100 |
| 2047999 | DUOTILT SASH LK LH ACT 11/16" V2, ADOBE | 100 |
| 2034822 | DUOTILT SASH LK LH ACT 11/16" V2 BR NKL | 100 |
| 2034823 | DUOTILT SASH LK LH ACT 11/16" V2 COPPER | 100 |
| 2034824 | DUOTILT SASH LK LH ACT 11/16" V2 BLACK | 100 |
| 2034825 | DUOTILT SASH LK LH ACT 11/16" V2 F.ORB | 100 |
| 2034826 | DUOTILT SASH LK RH ACT 11/16" V2 G2 WTE | 100 |
| 2034827 | DUOTILT SASH LK RH ACT 11/16" V2 B WTE | 100 |
| 2034828 | DUOTILT SASH LK RH ACT 11/16" V2 DK BRWN | 100 |
| 2034829 | DUOTILT SASH LK RH ACT 11/16" V2 G1 WTE | 100 |
| 2048239 | DUOTILT SASH LK RH ACT 11/16" V2 ALMOND | 100 |
| 2034830 | DUOTILT SASH LK RH ACT 11/16" V2 ANT BR | 100 |
| 2034832 | DUOTILT SASH LK RH ACT 11/16" V2 ALMD MK | 100 |
| 2034833 | DUOTILT SASH LK RH ACT 11/16" V2 D9BRASS | 100 |
| 2048000 | DUOTILT SASH LK RH ACT 11/16" V2, ADOBE | 100 |
| 2034834 | DUOTILT SASH LK RH ACT 11/16" V2 BR NKL | 100 |
| 2034835 | DUOTILT SASH LK RH ACT 11/16" V2 COPPER | 100 |
| 2034836 | DUOTILT SASH LK RH ACT 11/16" V2 BLACK | 100 |
| 2034837 | DUOTILT SASH LK RH ACT 11/16" V2 F. ORB | 100 |
| 2034838 | DUOTILT SASH LK LH PASS 11/16" V2 G2 WTE | 100 |
| 2034839 | DUOTILT SASH LK LH PASS 11/16" V2 B WTE | 100 |
| 2034840 | DUOTILT SASH LK LH PASS 11/16" V2 DK BRN | 100 |
| 2034841 | DUOTILT SASH LK LH PASS 11/16" V2 G1 WTE | 100 |
| 2048240 | DUOTILT SASH LK LH PASS 11/16" V2 ALMOND | 100 |
| 2034842 | DUOTILT SASH LK LH PASS 11/16" V2 ANT BR | 100 |
| 2034843 | DUOTILT SASH LK LH PASS 11/16" V2 ALD MK | 100 |
| 2034844 | DUOTILT SASH LK LH PASS 11/16" V2 D9 BR | 100 |

Aero

| Part Number | Description | Box Quantity |
|-------------|---|--------------|
| 2048045 | DUOTILT SASH LK LH PASS 11/16" V2, ADOBE | 100 |
| 2034845 | DUOTILT SASH LK LH PASS 11/16" V2 BR NKL | 100 |
| 2034846 | DUOTILT SASH LK LH PASS 11/16" V2 COPPER | 100 |
| 2034847 | DUOTILT SASH LK LH PASS 11/16" V2 BLACK | 100 |
| 2034848 | DUOTILT SASH LK LH PASS 11/16" V2 F. ORB | 100 |
| 2031433 | DUOTILT KEEPER TOP MOUNT TH1 V2, B WTE | 200 |
| 2032134 | DUOTILT KEEPER TOP MOUNT TH1 V2, DK BRWN | 200 |
| 2048242 | DUOTILT KEEPER TOP MOUNT TH1 V2, ALMOND | 200 |
| 2032135 | DUOTILT KEEPER TOP MOUNT TH1 V2, ALMD MK | 200 |
| 2032205 | DUOTILT KEEPER TOP MOUNT TH1 V2, BR NKL | 100 |
| 2033830 | DUOTILT KEEPER TOP MOUNT TH1 V2, BLACK | 200 |
| 2035132 | DUOTILT KEEPER TOP MOUNT SL1 V2, G2 WTE | 200 |
| 2048241 | DUOTILT KEEPER TOP MOUNT SL1 V2, ALMOND | 200 |
| 2035133 | DUOTILT KEEPER TOP MOUNT SL1 V2, ANT BR | 100 |
| 2035139 | DUOTILT KEEPER TOP MOUNT SL1 V2, ALMD MK | 200 |
| 2035140 | DUOTILT KEEPER TOP MOUNT SL1 V2, D9 BRASS | 100 |
| 2035141 | DUOTILT KEEPER TOP MOUNT SL1 V2, BR NKL | 100 |
| 2035142 | DUOTILT KEEPER TOP MOUNT SL1 V2, COPPER | 200 |
| 2035143 | DUOTILT KEEPER TOP MOUNT SL1 V2, BLACK | 200 |
| 2035144 | DUOTILT KEEPER TOP MOUNT SL1 V2, F. ORB | 200 |
| 2047041 | DUOTILT KEEPER FACEMOUNT, TH1 V2, G2 WTE | 100 |
| 2047055 | DUOTILT KEEPER FACEMOUNT, TH2 V2, G1 WTE | 100 |
| 2048001 | DUOTILT KEEPER FACEMOUNT, TH2 V2, ADOBE | 100 |

Tilt Latch

| Part Number | Description | Box Quantity |
|-------------|-------------------------------------|--------------|
| 2032081 | DUOTILT TILT LATCH ASSY LH | 250 |
| 2032082 | DUOTILT TILT LATCH ASSY LH | 250 |
| 2046198 | DUOTILT TILT LATCH LH, 4.50" CENTER | 250 |
| 2046216 | DUOTILT TILT LATCH RH, 4.50" CENTER | 250 |

Roto Frank of America, Inc.

14 Inspiration Lane, Chester, CT 06412
rotonorthamerica.com